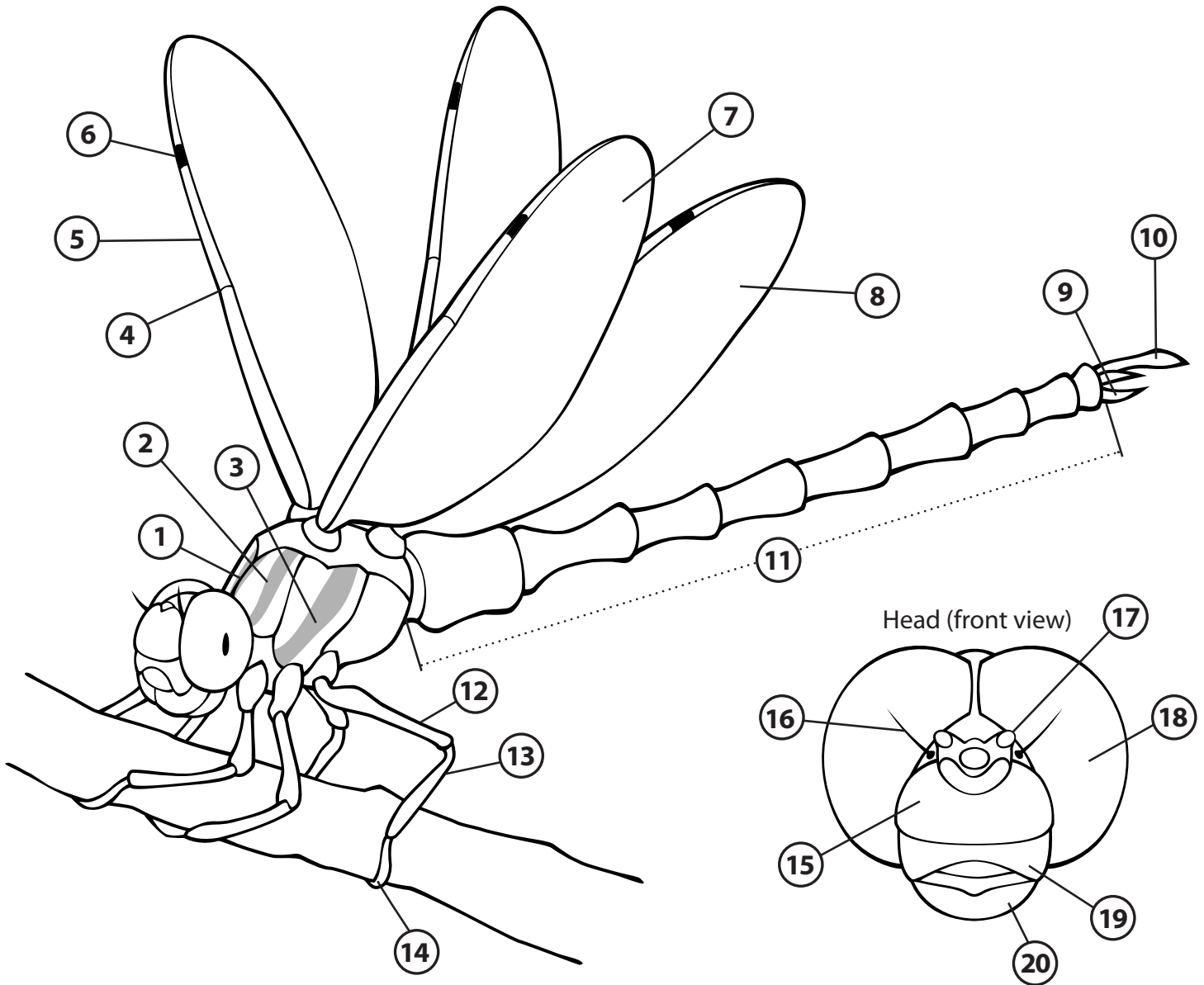


# Dragonfly External Anatomy Worksheet

The parts of the dragonfly below have been labeled. Use the lines below to correctly name each part.



1. \_\_\_\_\_
2. \_\_\_\_\_
3. \_\_\_\_\_
4. \_\_\_\_\_
5. \_\_\_\_\_
6. \_\_\_\_\_
7. \_\_\_\_\_
8. \_\_\_\_\_
9. \_\_\_\_\_
10. \_\_\_\_\_

11. \_\_\_\_\_
12. \_\_\_\_\_
13. \_\_\_\_\_
14. \_\_\_\_\_
15. \_\_\_\_\_
16. \_\_\_\_\_
17. \_\_\_\_\_
18. \_\_\_\_\_
19. \_\_\_\_\_
20. \_\_\_\_\_

# Dragonfly External Anatomy Answer Key

1. Middorsal stripe
2. Antehumeral stripe
3. Humeral stripe
4. Nodus
5. Costa
6. Stigma or pterostigma
7. Forewing
8. Hindwing
9. Epiproco or lower appendages
10. Cercus or upper appendages
11. Segment 1 through Segment 10
12. Femur
13. Tibia
14. Tarsus
15. Frons
16. Antenna
17. Ocelli
18. Compound eye
19. Postclypeus
20. Mandible